

Appendix D5 - Distance Boxplots

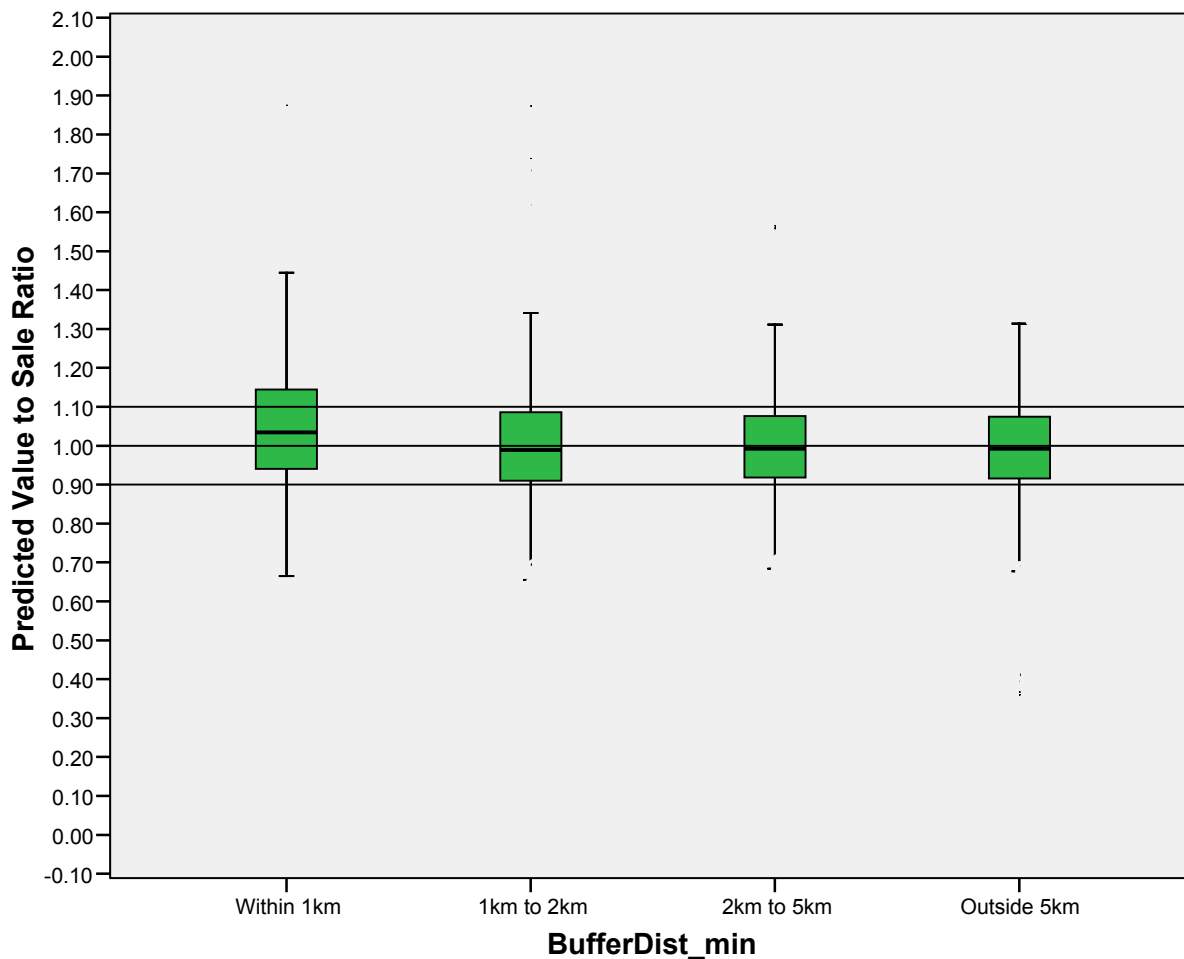
Boxplot ASR by Distance All Sales

BufferDist_min

Case Processing Summary

BufferDist_min		Cases					
		Valid		Missing		Total	
		N	Percent	N	Percent	N	Percent
ASRX	1.00 Within 1km	279	100.0%	0	.0%	279	100.0%
	2.00 1km to 2km	989	100.0%	0	.0%	989	100.0%
	5.00 2km to 5km	3063	100.0%	0	.0%	3063	100.0%
	6.00 Outside 5km	37093	100.0%	0	.0%	37093	100.0%

ASRX



Boxplots ASR by Distance by Market Area

MODEL = 05RR030 Napanee, Loyalist Twp, Frontenac/Lennox & Addington Counties South Rural/WF

BufferDist_min

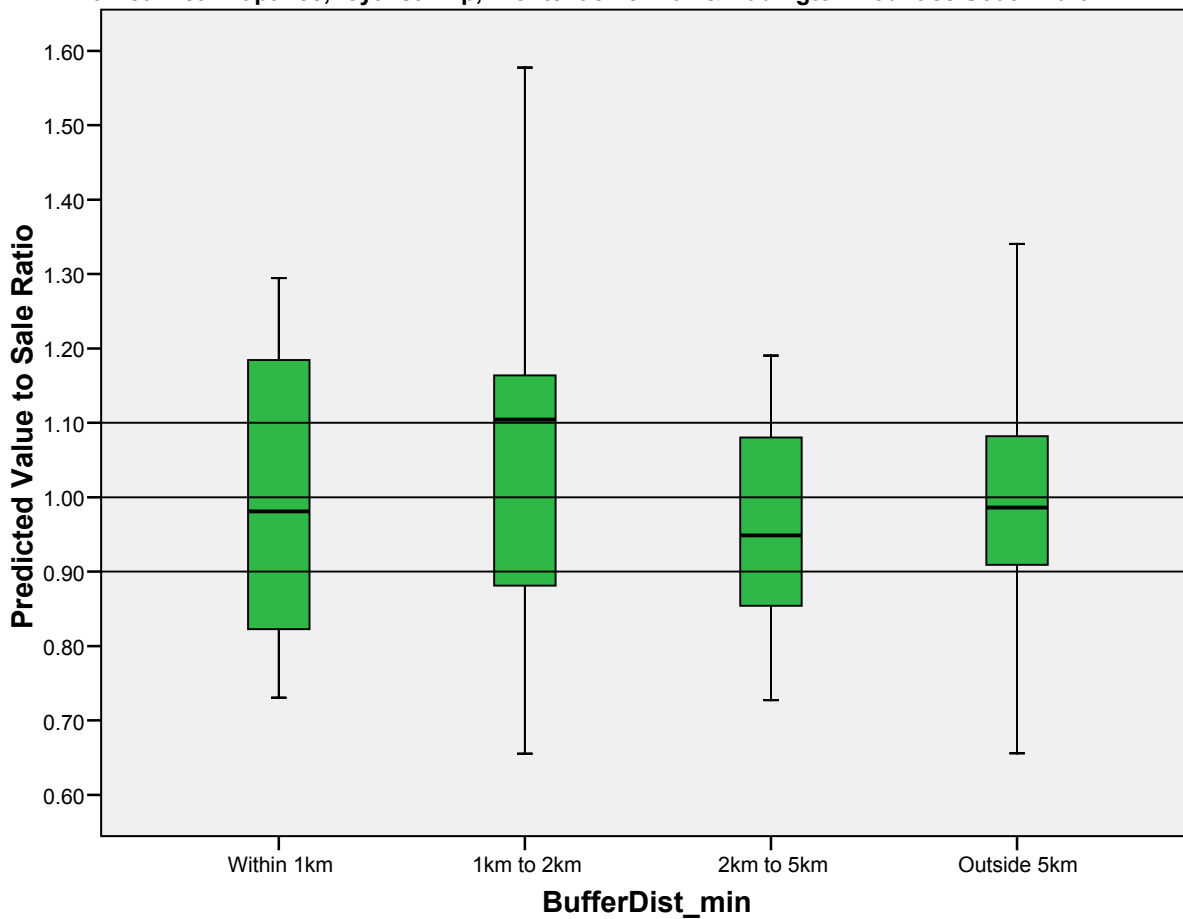
Case Processing Summary^a

BufferDist_min		Cases					
		Valid		Missing		Total	
		N	Percent	N	Percent	N	Percent
ASRX	1.00 Within 1km	13	100.0%	0	.0%	13	100.0%
	2.00 1km to 2km	7	100.0%	0	.0%	7	100.0%
	5.00 2km to 5km	8	100.0%	0	.0%	8	100.0%
	6.00 Outside 5km	2606	100.0%	0	.0%	2606	100.0%

a. MODEL = 05RR030 Napanee,Loyalist Twp, Frontenac/Lennox & Addington Counties South Rural/WF

ASRX

Market Area: Napanee,Loyalist Twp, Frontenac/Lennox & Addington Counties South Rural/WF



MODEL = 20RR010 Brant, Halidmand, Norfolk Counties - Rural/WF

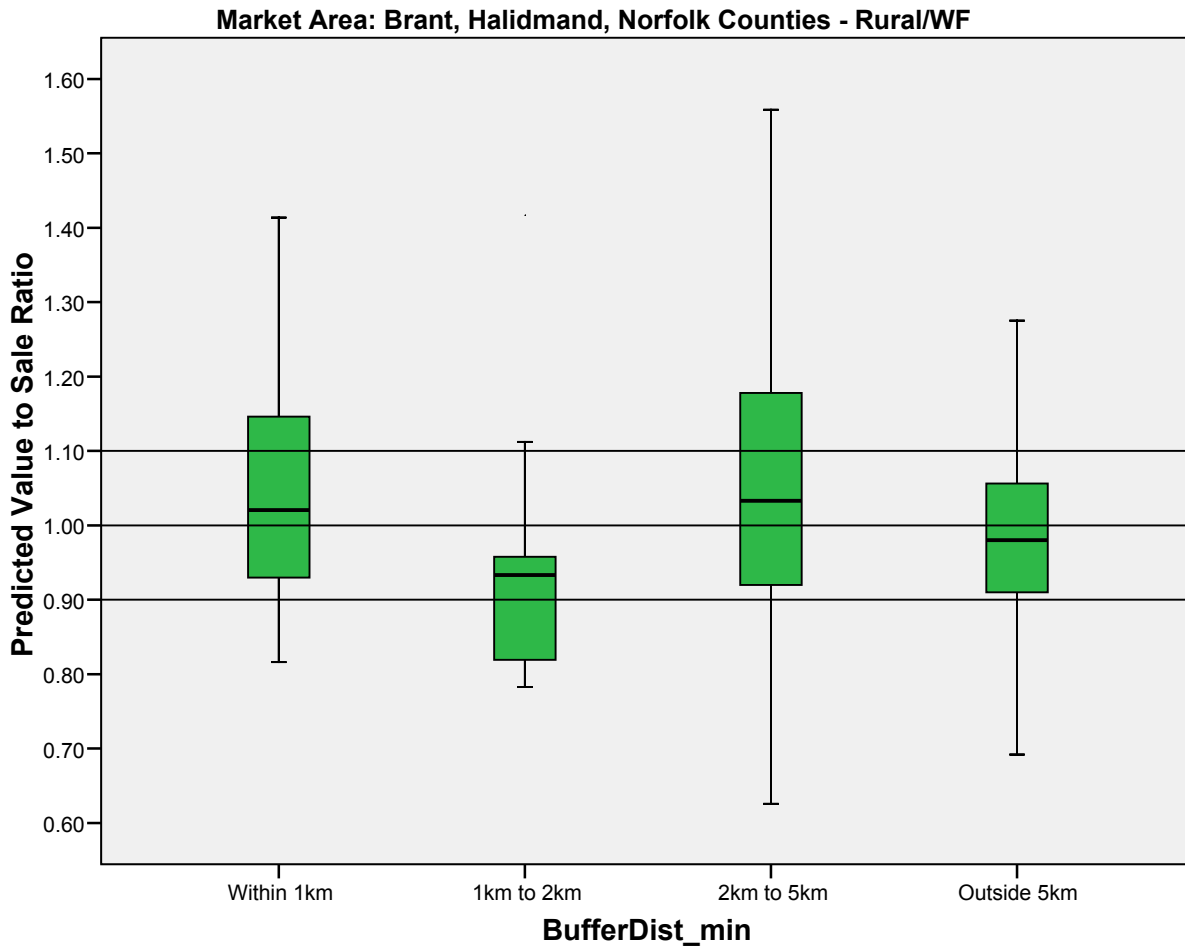
BufferDist_min

Case Processing Summary^a

BufferDist_min			Cases					
			Valid		Missing		Total	
			N	Percent	N	Percent	N	Percent
ASRX	1.00	Within 1km	25	100.0%	0	.0%	25	100.0%
	2.00	1km to 2km	9	100.0%	0	.0%	9	100.0%
	5.00	2km to 5km	71	100.0%	0	.0%	71	100.0%
	6.00	Outside 5km	4868	100.0%	0	.0%	4868	100.0%

a. MODEL = 20RR010 Brant, Halidmand, Norfolk Counties - Rural/WF

ASRX



MODEL = 22RR010 Dufferin & Wellington Counties - Rural

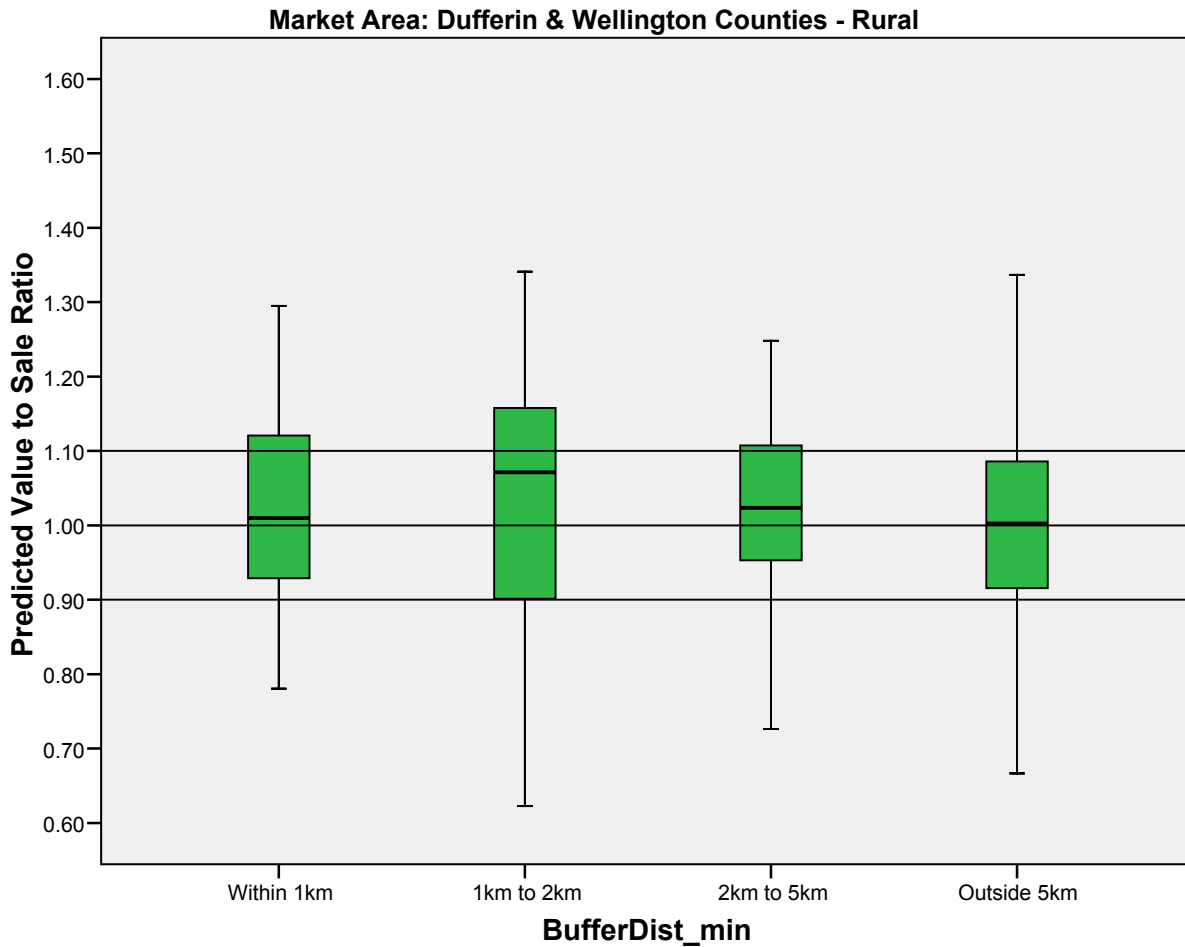
BufferDist_min

Case Processing Summary^a

BufferDist_min			Cases					
			Valid		Missing		Total	
			N	Percent	N	Percent	N	Percent
ASRX	1.00	Within 1km	26	100.0%	0	.0%	26	100.0%
	2.00	1km to 2km	25	100.0%	0	.0%	25	100.0%
	5.00	2km to 5km	83	100.0%	0	.0%	83	100.0%
	6.00	Outside 5km	1597	100.0%	0	.0%	1597	100.0%

a. MODEL = 22RR010 Dufferin & Wellington Counties - Rural

ASRX



MODEL = 22UR020 Dufferin County Villages

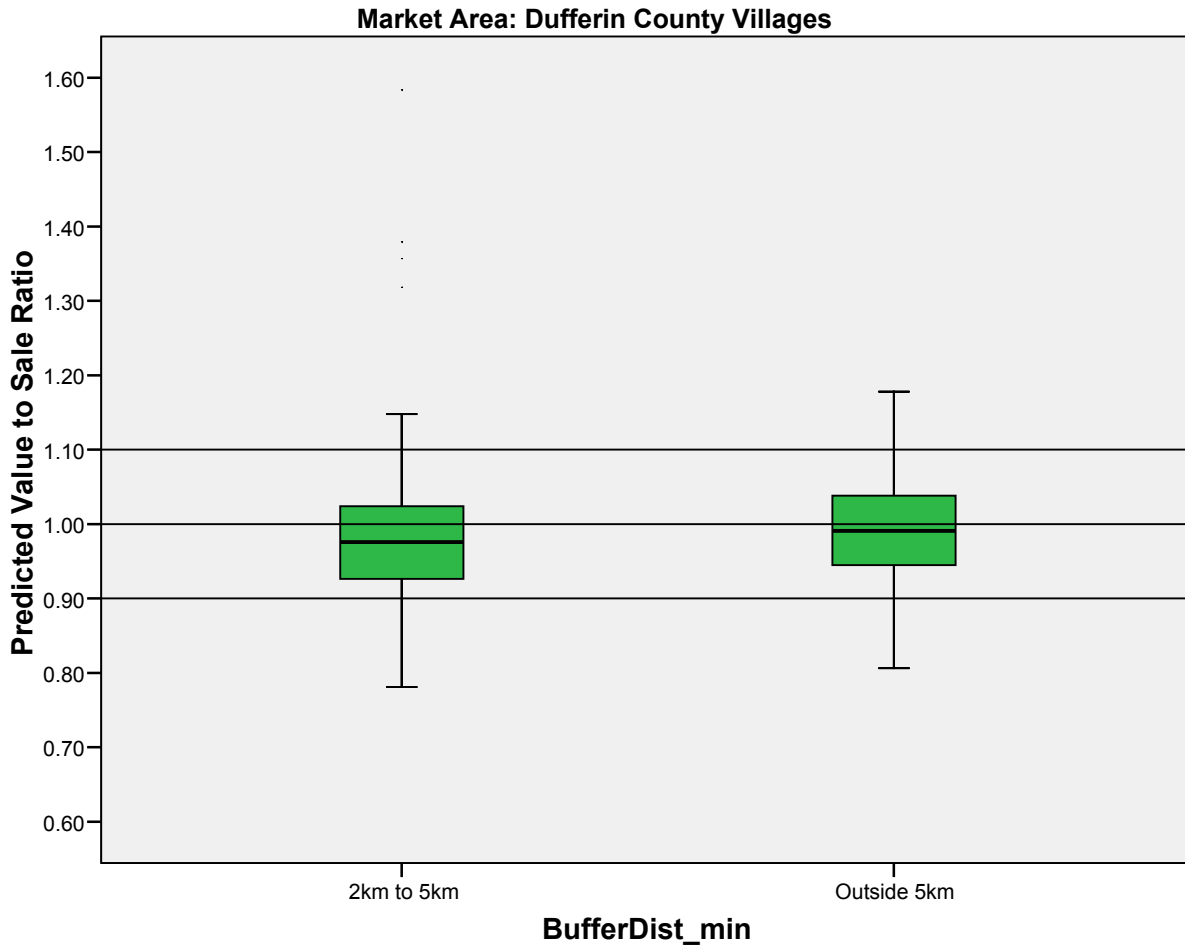
BufferDist_min

Case Processing Summary^a

BufferDist_min		Cases					
		Valid		Missing		Total	
		N	Percent	N	Percent	N	Percent
ASRX	5.00 2km to 5km	404	100.0%	0	.0%	404	100.0%
	6.00 Outside 5km	2017	100.0%	0	.0%	2017	100.0%

a. MODEL = 22UR020 Dufferin County Villages

ASRX



MODEL = 22UR030 Wellington County Villages

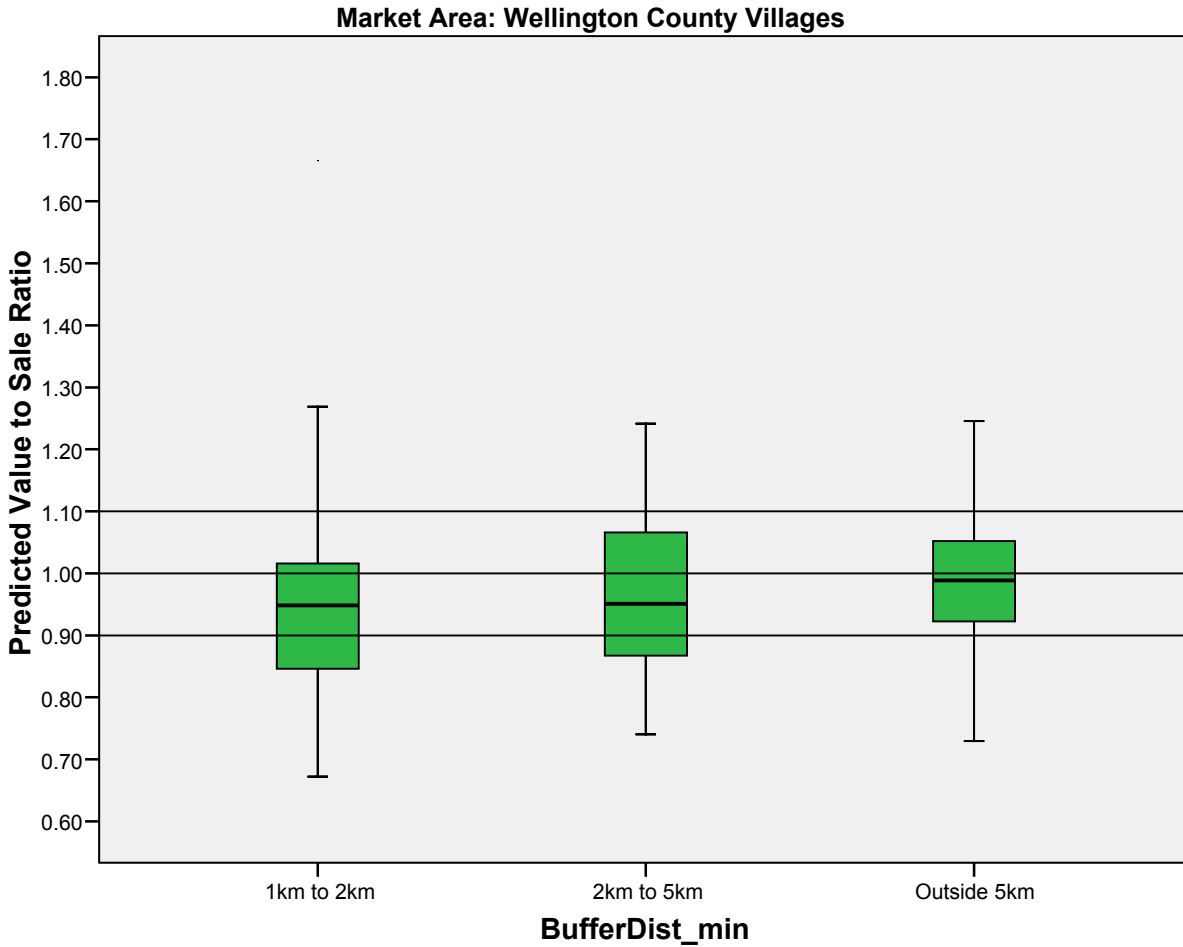
BufferDist_min

Case Processing Summary^a

BufferDist_min		Cases					
		Valid		Missing		Total	
		N	Percent	N	Percent	N	Percent
ASRX	2.00 1km to 2km	92	100.0%	0	.0%	92	100.0%
	5.00 2km to 5km	32	100.0%	0	.0%	32	100.0%
	6.00 Outside 5km	2300	100.0%	0	.0%	2300	100.0%

a. MODEL = 22UR030 Wellington County Villages

ASRX



MODEL = 23RR010 Elgin, Middlesex & Oxford Counties - Rural

BufferDist_min

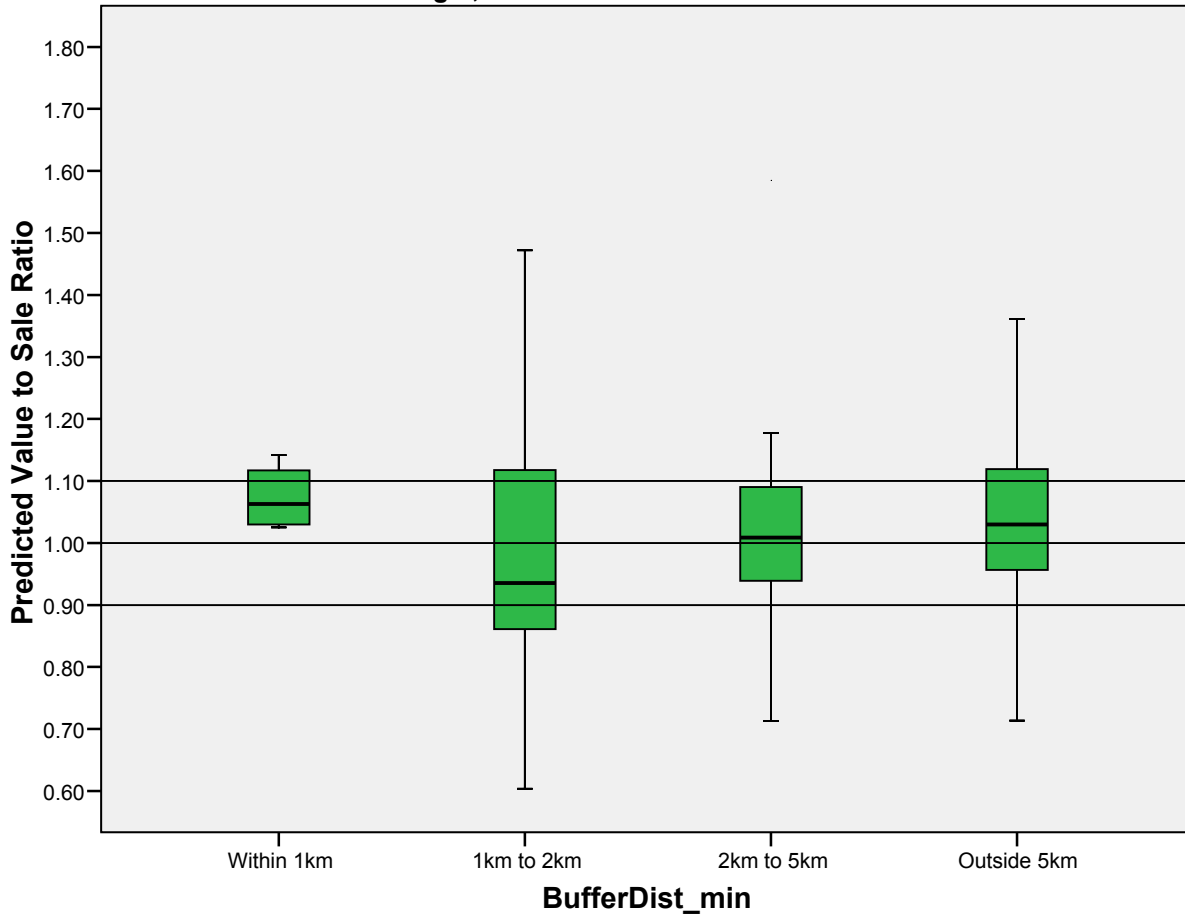
Case Processing Summary^a

BufferDist_min			Cases					
			Valid		Missing		Total	
			N	Percent	N	Percent	N	Percent
ASRX	1.00	Within 1km	4	100.0%	0	.0%	4	100.0%
	2.00	1km to 2km	52	100.0%	0	.0%	52	100.0%
	5.00	2km to 5km	72	100.0%	0	.0%	72	100.0%
	6.00	Outside 5km	4300	100.0%	0	.0%	4300	100.0%

a. MODEL = 23RR010 Elgin, Middlesex & Oxford Counties - Rural

ASRX

Market Area: Elgin, Middlesex & Oxford Counties - Rural



MODEL = 24RR010 Huron & Perth Counties - Rural/Waterfront

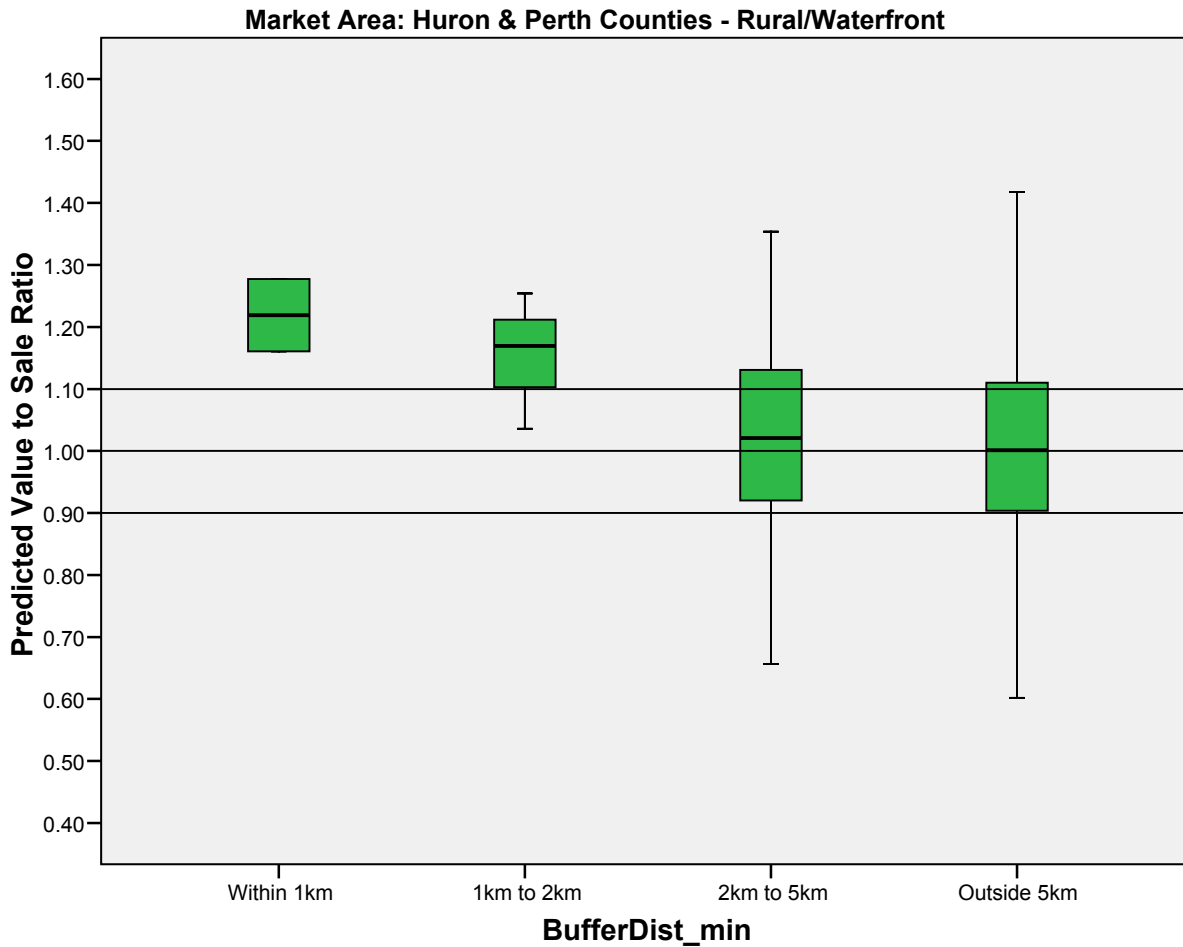
BufferDist_min

Case Processing Summary^a

BufferDist_min		Cases					
		Valid		Missing		Total	
		N	Percent	N	Percent	N	Percent
ASRX	1.00 Within 1km	2	100.0%	0	.0%	2	100.0%
	2.00 1km to 2km	3	100.0%	0	.0%	3	100.0%
	5.00 2km to 5km	98	100.0%	0	.0%	98	100.0%
	6.00 Outside 5km	786	100.0%	0	.0%	786	100.0%

a. MODEL = 24RR010 Huron & Perth Counties - Rural/Waterfront

ASRX



MODEL = 25RR010 Grey & Bruce Counties - Rural/Waterfront

BufferDist_min

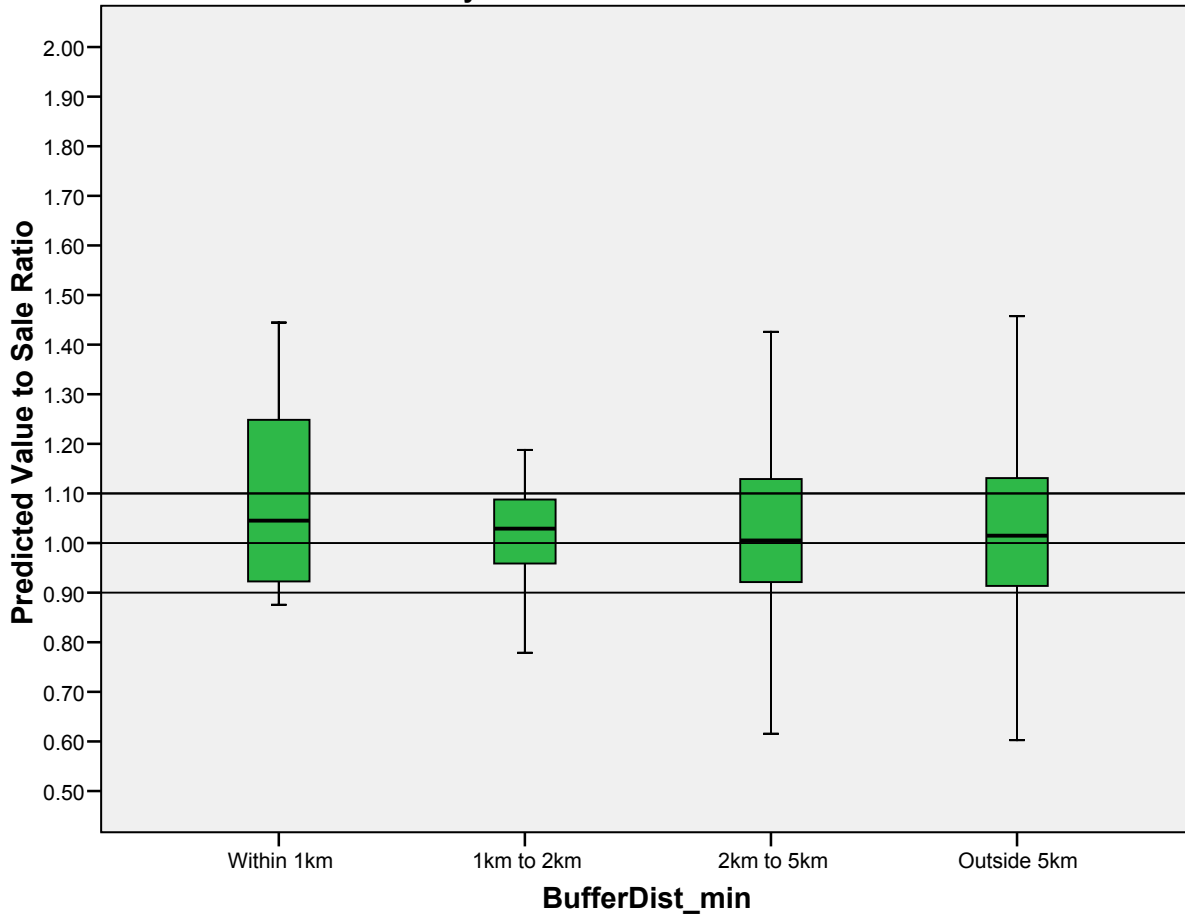
Case Processing Summary^a

BufferDist_min			Cases					
			Valid		Missing		Total	
			N	Percent	N	Percent	N	Percent
ASRX	1.00	Within 1km	12	100.0%	0	.0%	12	100.0%
	2.00	1km to 2km	19	100.0%	0	.0%	19	100.0%
	5.00	2km to 5km	265	100.0%	0	.0%	265	100.0%
	6.00	Outside 5km	2692	100.0%	0	.0%	2692	100.0%

a. MODEL = 25RR010 Grey & Bruce Counties - Rural/Waterfront

ASRX

Market Area: Grey & Bruce Counties - Rural/Waterfront



MODEL = 25UR010 Grey & Bruce Counties - Urban

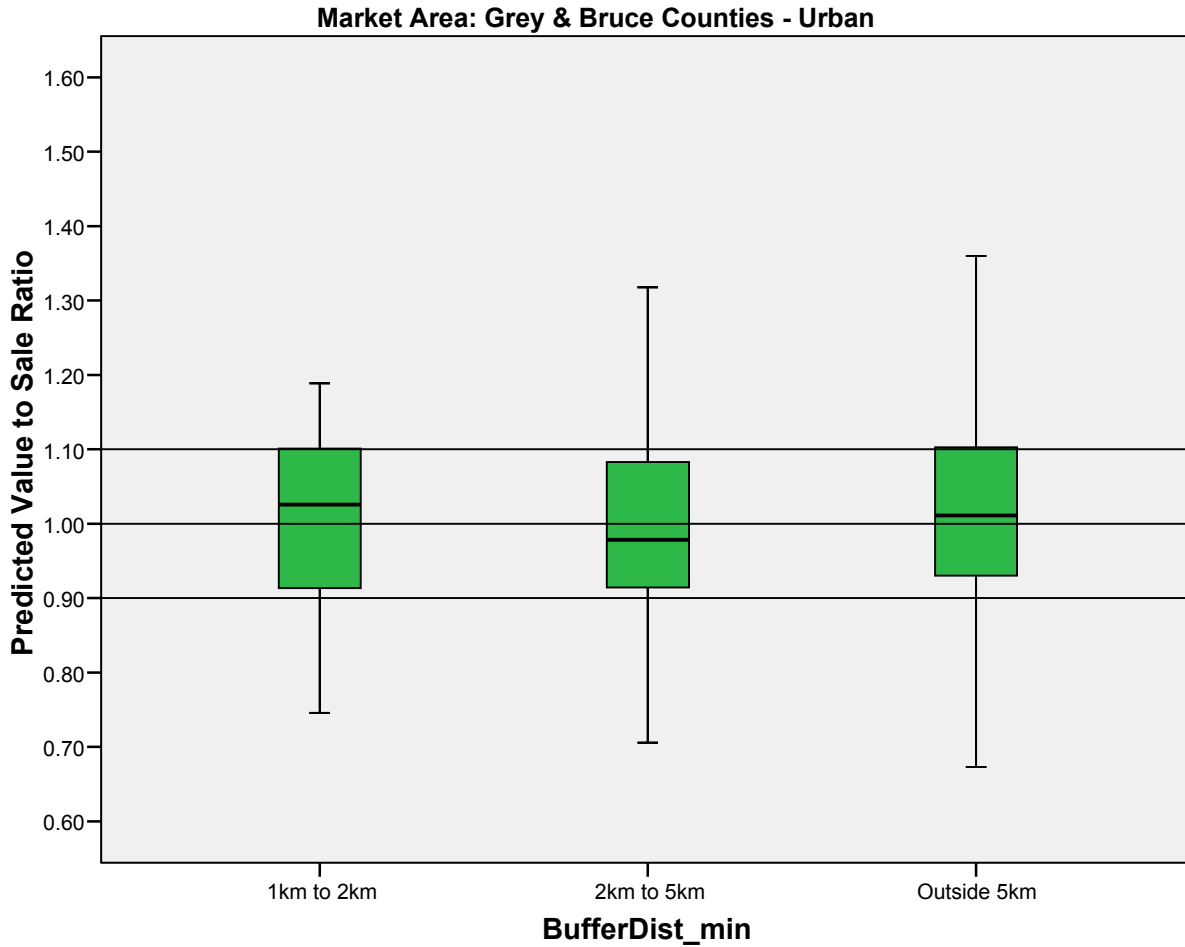
BufferDist_min

Case Processing Summary^a

BufferDist_min		Cases					
		Valid		Missing		Total	
		N	Percent	N	Percent	N	Percent
ASRX	2.00 1km to 2km	16	100.0%	0	.0%	16	100.0%
	5.00 2km to 5km	161	100.0%	0	.0%	161	100.0%
	6.00 Outside 5km	4180	100.0%	0	.0%	4180	100.0%

a. MODEL = 25UR010 Grey & Bruce Counties - Urban

ASRX



MODEL = 26RR010 Chatham-Kent - Rural/Wallaceburg

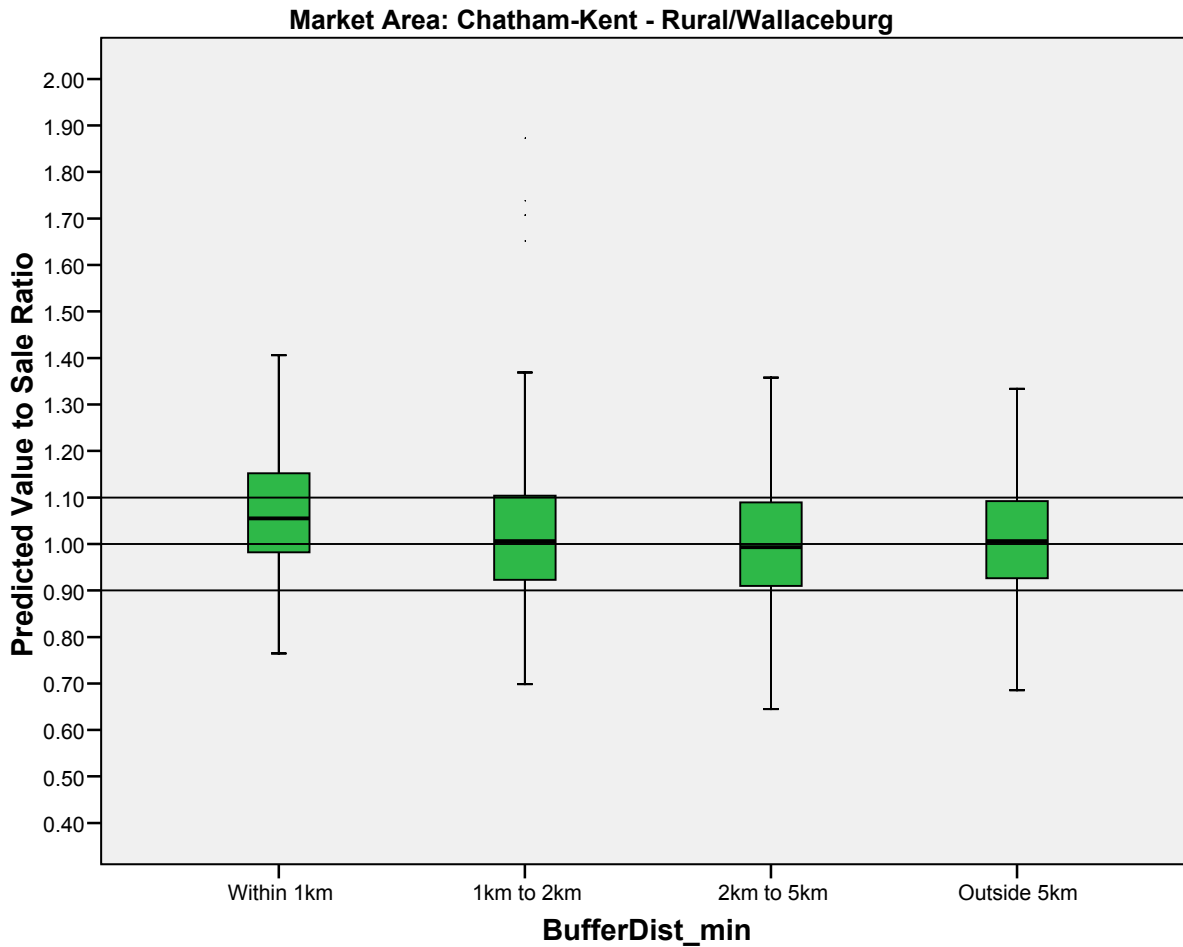
BufferDist_min

Case Processing Summary^a

BufferDist_min		Cases					
		Valid		Missing		Total	
		N	Percent	N	Percent	N	Percent
ASRX	1.00 Within 1km	83	100.0%	0	.0%	83	100.0%
	2.00 1km to 2km	300	100.0%	0	.0%	300	100.0%
	5.00 2km to 5km	836	100.0%	0	.0%	836	100.0%
	6.00 Outside 5km	663	100.0%	0	.0%	663	100.0%

a. MODEL = 26RR010 Chatham-Kent - Rural/Wallaceburg

ASRX



MODEL = 26RR030 Lambton County - Rural/WF

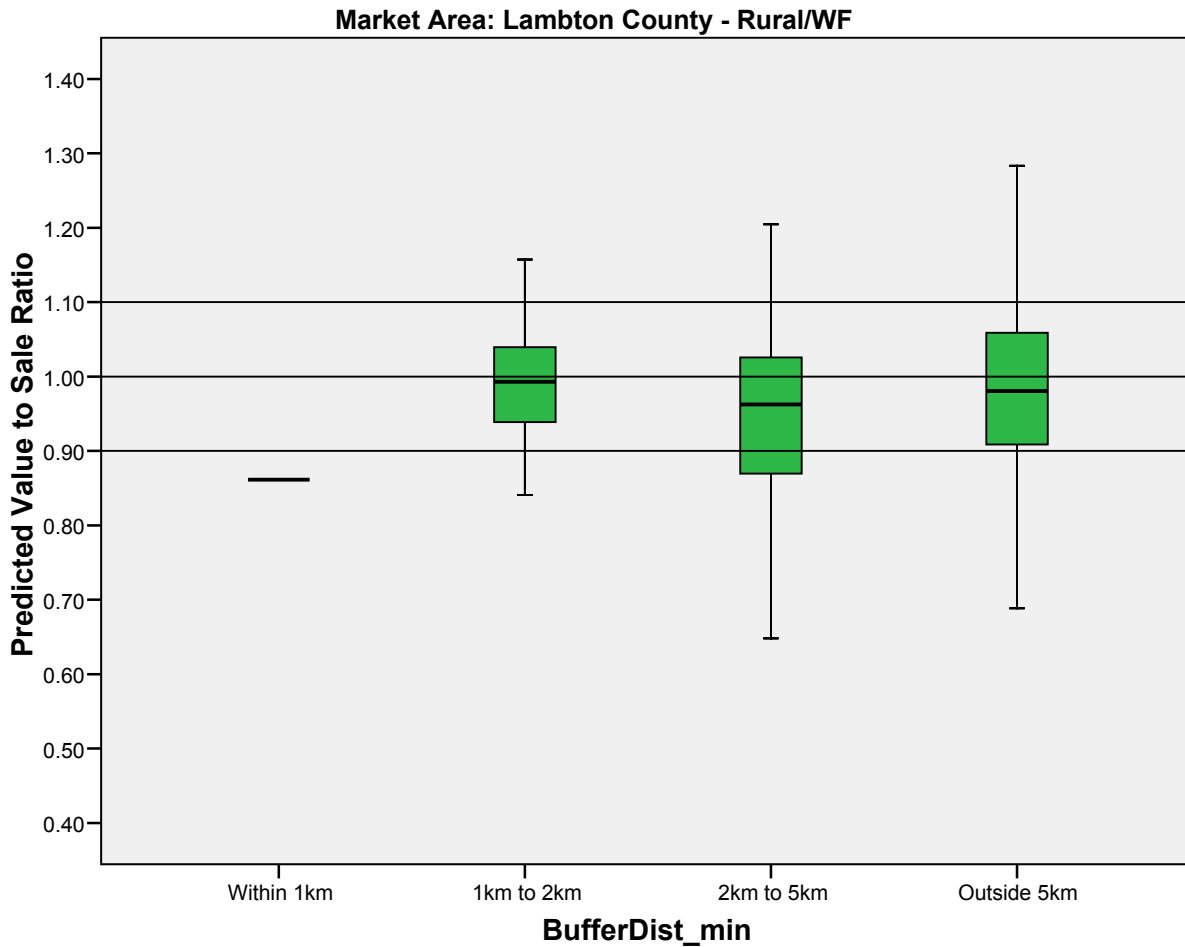
BufferDist_min

Case Processing Summary^a

BufferDist_min		Cases					
		Valid		Missing		Total	
		N	Percent	N	Percent	N	Percent
ASRX	1.00 Within 1km	1	100.0%	0	.0%	1	100.0%
	2.00 1km to 2km	23	100.0%	0	.0%	23	100.0%
	5.00 2km to 5km	76	100.0%	0	.0%	76	100.0%
	6.00 Outside 5km	1942	100.0%	0	.0%	1942	100.0%

a. MODEL = 26RR030 Lambton County - Rural/WF

ASRX



MODEL = 27RR120 Essex County

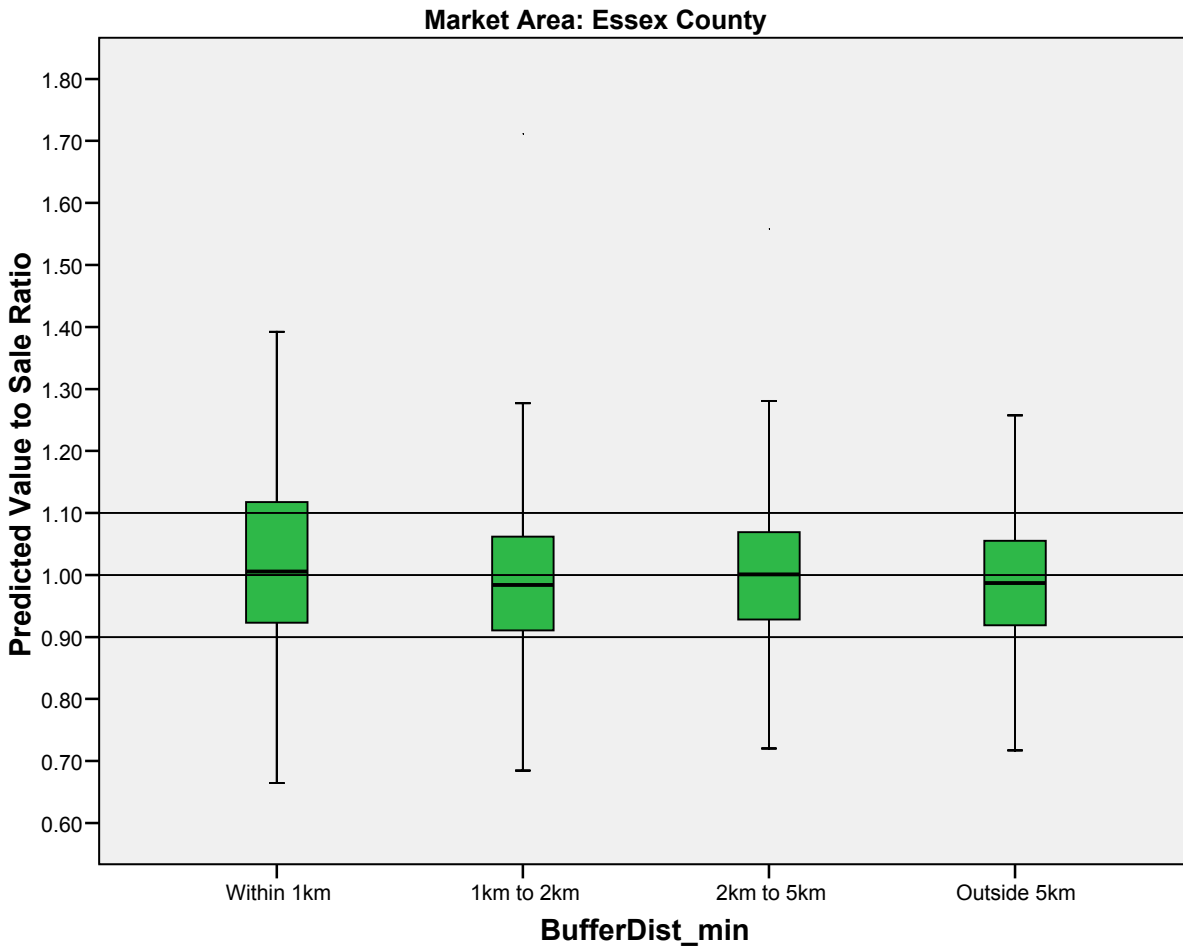
BufferDist_min

Case Processing Summary^a

BufferDist_min		Cases					
		Valid		Missing		Total	
		N	Percent	N	Percent	N	Percent
ASRX	1.00 Within 1km	112	100.0%	0	.0%	112	100.0%
	2.00 1km to 2km	272	100.0%	0	.0%	272	100.0%
	5.00 2km to 5km	768	100.0%	0	.0%	768	100.0%
	6.00 Outside 5km	2198	100.0%	0	.0%	2198	100.0%

a. MODEL = 27RR120 Essex County

ASRX



MODEL = 27UR070 Lasalle, Tecumseh, Lakeshore Urban & Essex Urban

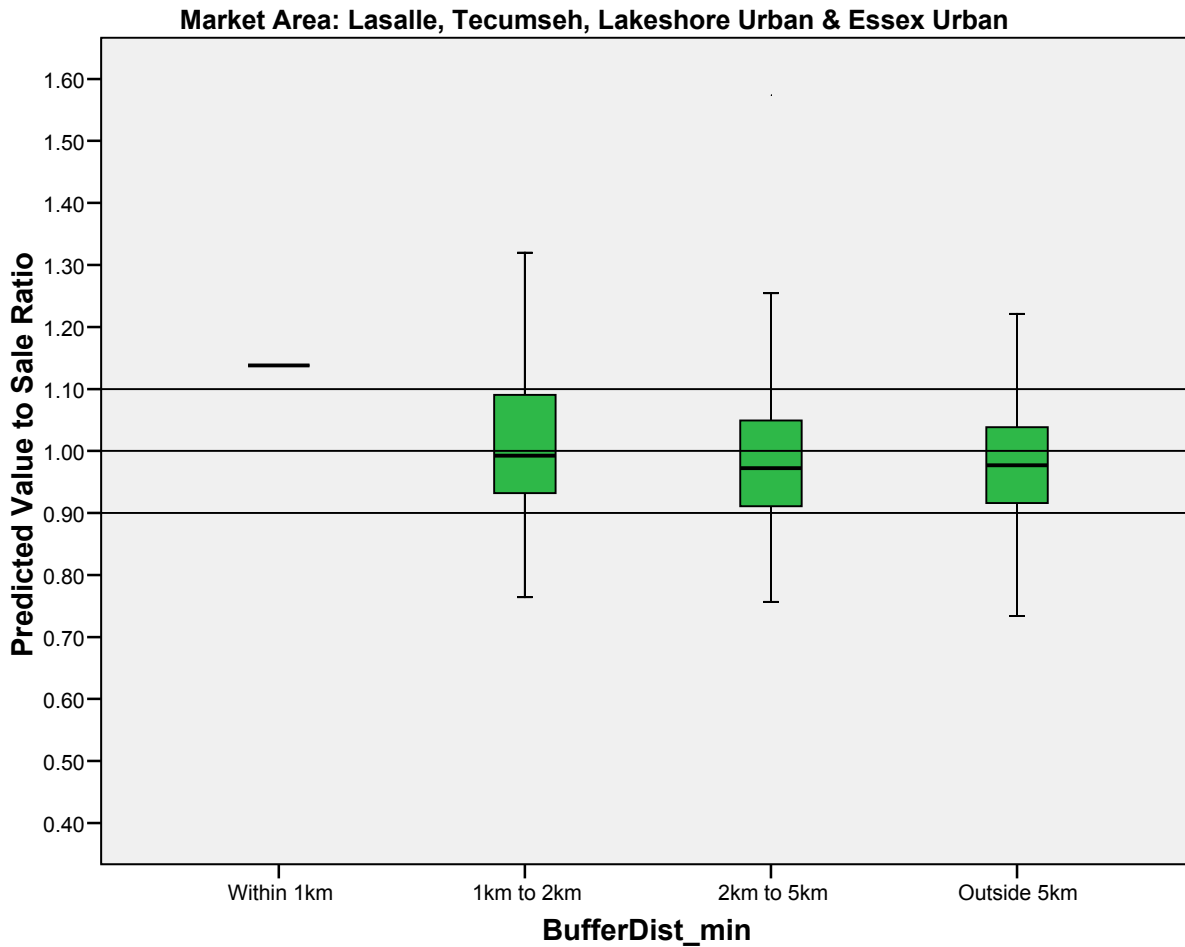
BufferDist_min

Case Processing Summary^a

BufferDist_min		Cases					
		Valid		Missing		Total	
		N	Percent	N	Percent	N	Percent
ASRX	1.00 Within 1km	1	100.0%	0	.0%	1	100.0%
	2.00 1km to 2km	154	100.0%	0	.0%	154	100.0%
	5.00 2km to 5km	179	100.0%	0	.0%	179	100.0%
	6.00 Outside 5km	2660	100.0%	0	.0%	2660	100.0%

a. MODEL = 27UR070 Lasalle, Tecumseh, Lakeshore Urban & Essex Urban

ASRX



MODEL = 31RR010 District of Algoma

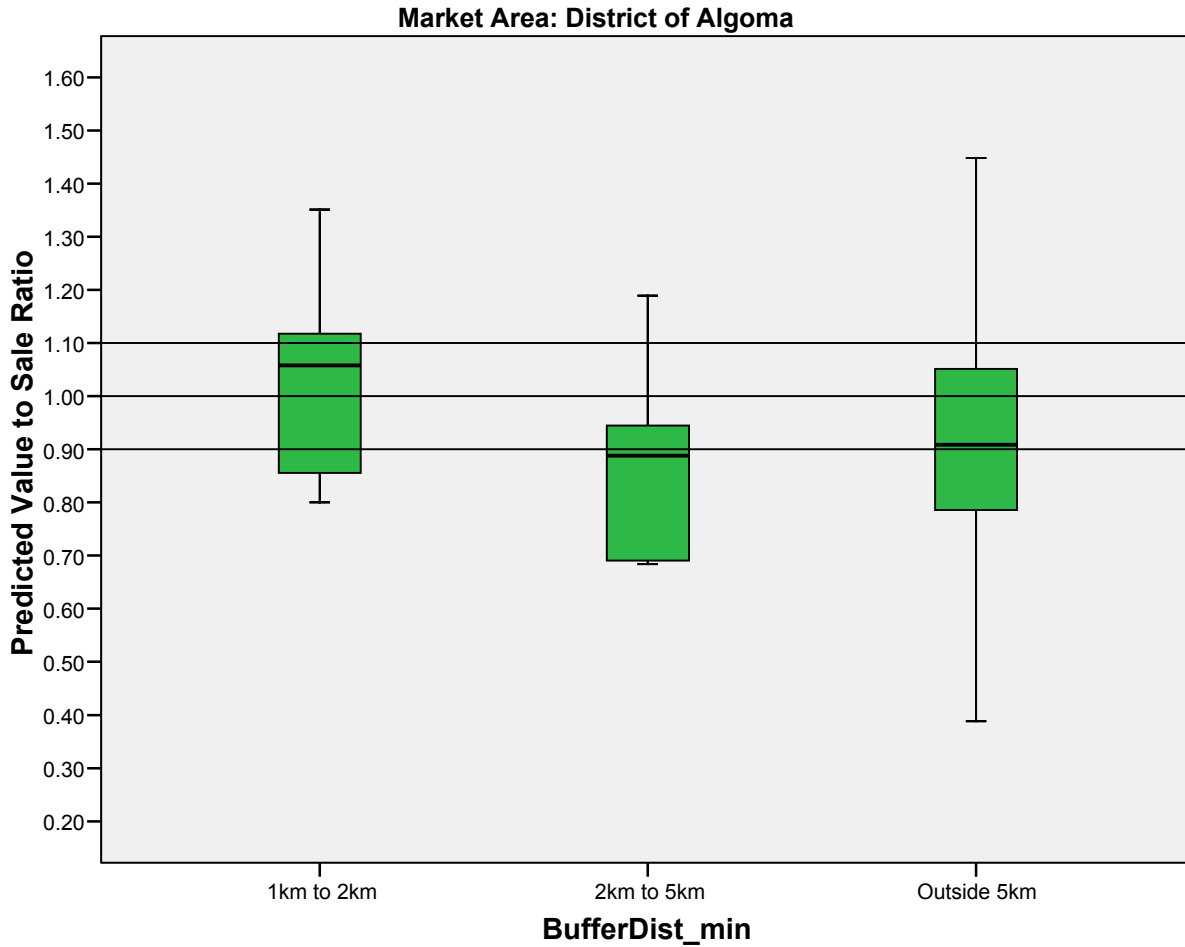
BufferDist_min

Case Processing Summary^a

BufferDist_min		Cases					
		Valid		Missing		Total	
		N	Percent	N	Percent	N	Percent
ASRX	2.00 1km to 2km	5	100.0%	0	.0%	5	100.0%
	5.00 2km to 5km	7	100.0%	0	.0%	7	100.0%
	6.00 Outside 5km	1483	100.0%	0	.0%	1483	100.0%

a. MODEL = 31RR010 District of Algoma

ASRX



MODEL = 31UR010 Sault Ste. Marie/Prince Twp

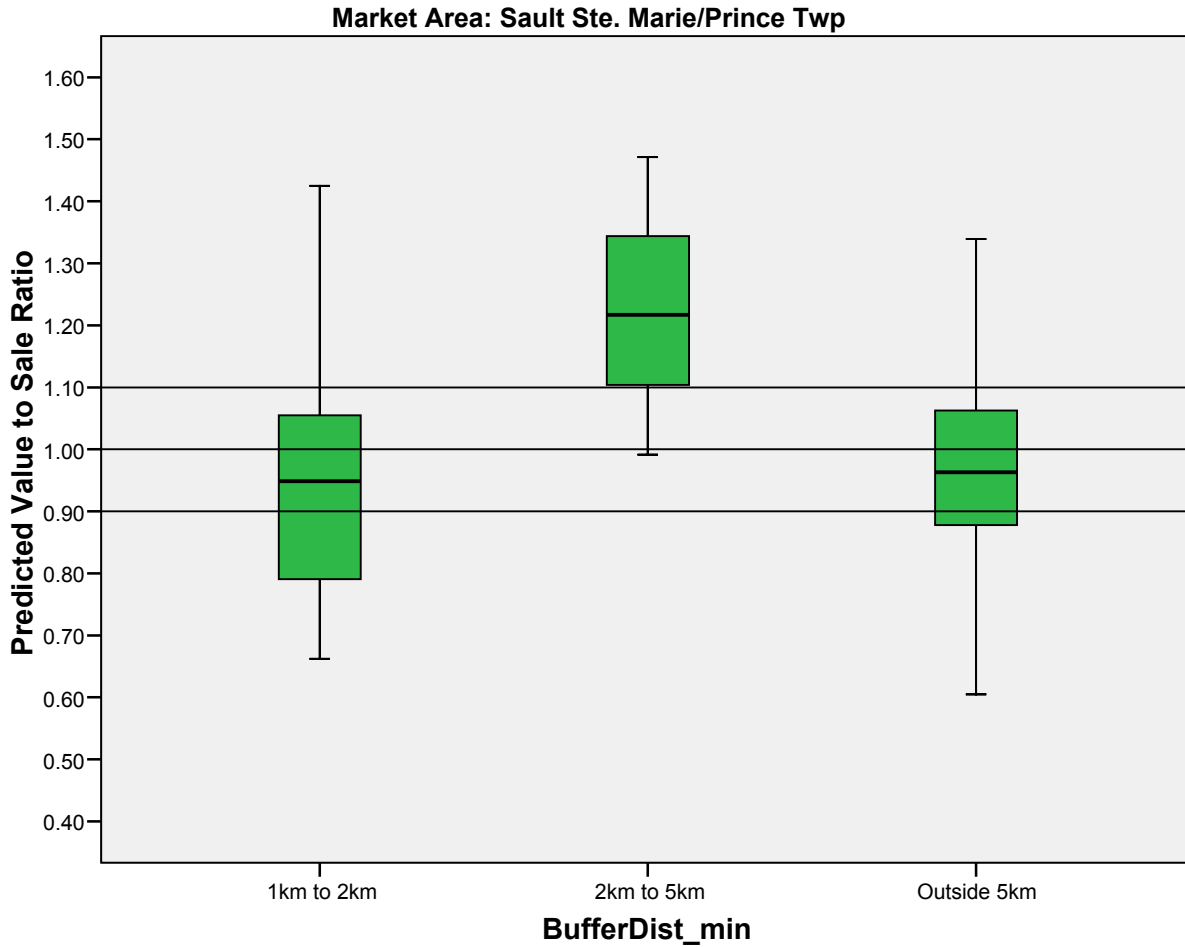
BufferDist_min

Case Processing Summary^a

BufferDist_min		Cases					
		Valid		Missing		Total	
		N	Percent	N	Percent	N	Percent
ASRX	2.00 1km to 2km	12	100.0%	0	.0%	12	100.0%
	5.00 2km to 5km	3	100.0%	0	.0%	3	100.0%
	6.00 Outside 5km	2801	100.0%	0	.0%	2801	100.0%

a. MODEL = 31UR010 Sault Ste. Marie/Prince Twp

ASRX



Boxplot ASR by Distance by Market Type

Rural

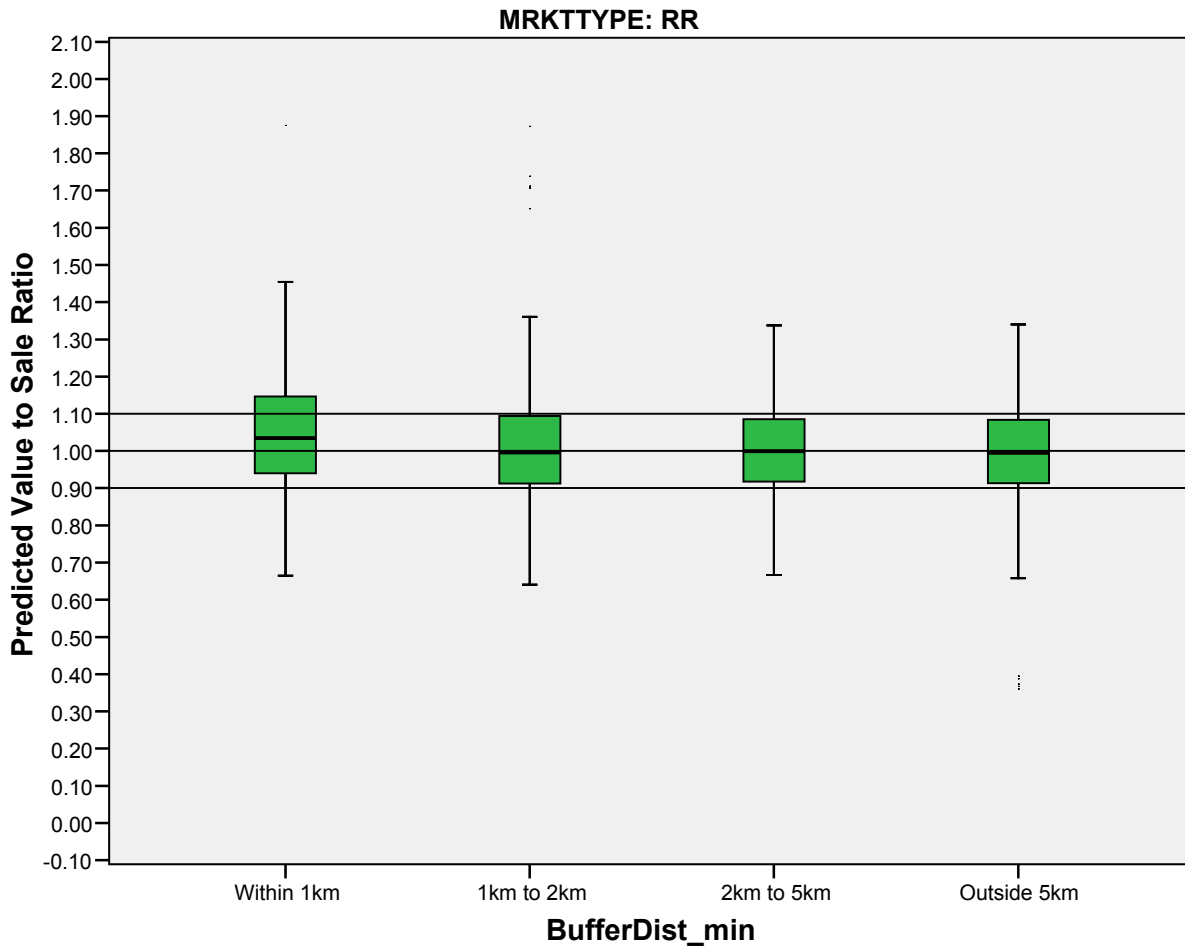
BufferDist_min

Case Processing Summary^a

BufferDist_min		Cases					
		Valid		Missing		Total	
		N	Percent	N	Percent	N	Percent
ASRX	1.00 Within 1km	278	100.0%	0	.0%	278	100.0%
	2.00 1km to 2km	715	100.0%	0	.0%	715	100.0%
	5.00 2km to 5km	2284	100.0%	0	.0%	2284	100.0%
	6.00 Outside 5km	23135	100.0%	0	.0%	23135	100.0%

a. MRKTTYE = RR

ASRX



Urban

BufferDist_min

Case Processing Summary^a

BufferDist_min		Cases					
		Valid		Missing		Total	
		N	Percent	N	Percent	N	Percent
ASRX	1.00 Within 1km	1	100.0%	0	.0%	1	100.0%
	2.00 1km to 2km	274	100.0%	0	.0%	274	100.0%
	5.00 2km to 5km	779	100.0%	0	.0%	779	100.0%
	6.00 Outside 5km	13958	100.0%	0	.0%	13958	100.0%

a. MRKTTYPE = UR

ASRX

